



FOUR WINNS[®]

2005 > *DECK BOATS*





PRESENTING THE FOUR WINNS DECK BOATS FOR 2005.



Deckboats are hot, and no wonder. This is boating at its best: Pure luxury. Ultimate exhilaration. Utter relaxation. No, Four Winns didn't invent the deck boat. But drawing upon 30 years of experience in boat building, we've gone a long way toward perfecting it. In this catalog, you will find four of the most feature-rich boats ever built. They're backed by boating's strongest warranty, and serviced by a select group of customer-conscious dealers.

We invite you to compare Funship™ construction, performance, style and functionality against any other brand. You'll find that, of all the deck boats out there, no one gives boaters a better value than Four Winns. For additional product details and manufacturer's suggested retail pricing, visit our web site at www.fourwinns.com. See you on the water!

Sincerely,

A handwritten signature in white ink, appearing to read "John Anderson".

John Anderson, President

TABLE OF CONTENTS

2-13

ABOUT FOUR WINNS



14-15

FUNSHIP OVERVIEW



16-17

194 FUNSHIP



18-19

214 FUNSHIP





20-21

234 FUNSHIP

22-23

264 FUNSHIP

24-27

FUNSHIP EQUIPMENT LISTS

28

CANVAS AND COLORS

29

SELECTED OPTIONS





WHY FOUR WINNS?

Sure, it's a beautiful boat now. But can the good looks — and the fun you're having — really last? The answer is yes. Four Winns uses premium components and materials, not just in what you can see and feel, but also in those parts of your boat's construction that may never see the light of day. Premium gel coat. A higher grade of carpet. Stout stainless and metal fittings. Choices? We've made plenty of them. Sacrifices? Not when it comes to our product's quality. And that is reason number one to choose Four Winns.

A SUPERIOR INTERIOR

Your home's floor plan determines its livability. Your Funship's floor plan ensures your satisfaction. There's room to spare!



NON-FOGGING GAUGES

You'd think glass would be superior to plastic when it comes to gauge covers. Not so. Our plastic lenses are specially coated to prevent fogging and condensation.



FIBERGLASS LINER

Yes, it costs more to put a full fiberglass liner in a boat. But we know you'll appreciate the convenience associated with its care and maintenance, not to mention the outstanding durability.



SNAP-IN CARPET

They call it Aqua-Trac. We call it amazing. This 40-ounce, marine-grade carpeting is highly resistant to wear. It even snaps out, so you can clean beneath.

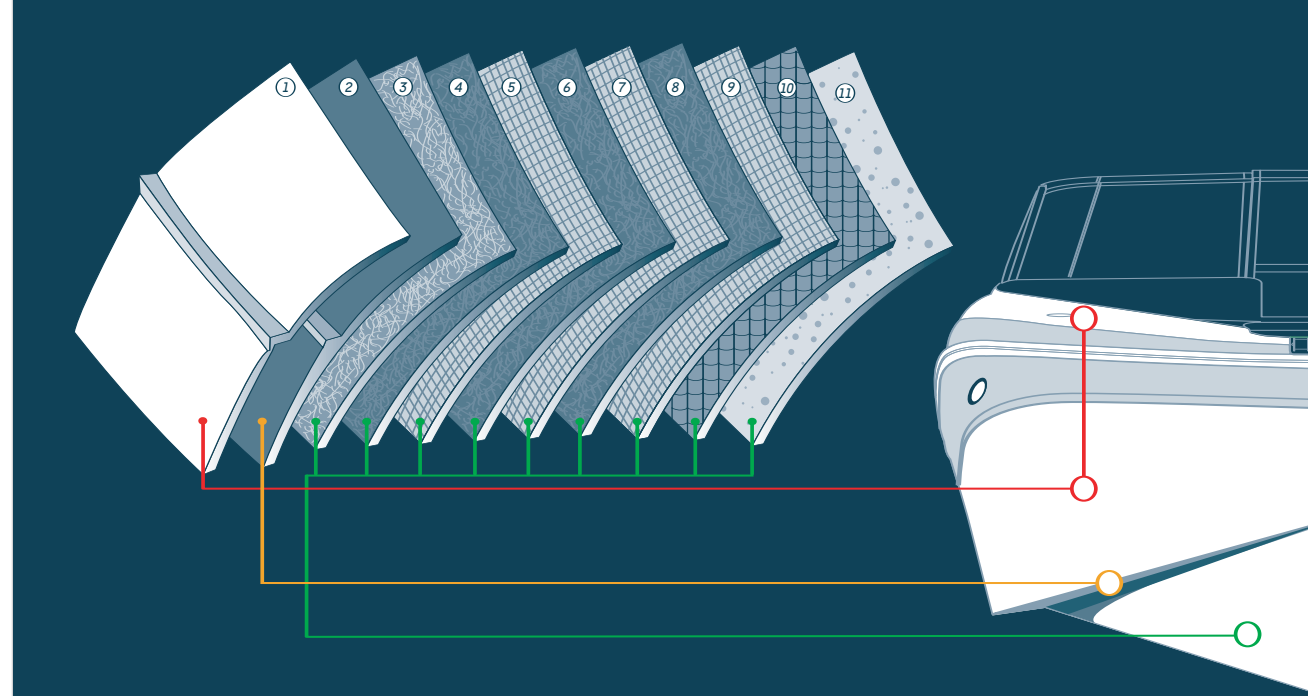


CONSTRUCTION

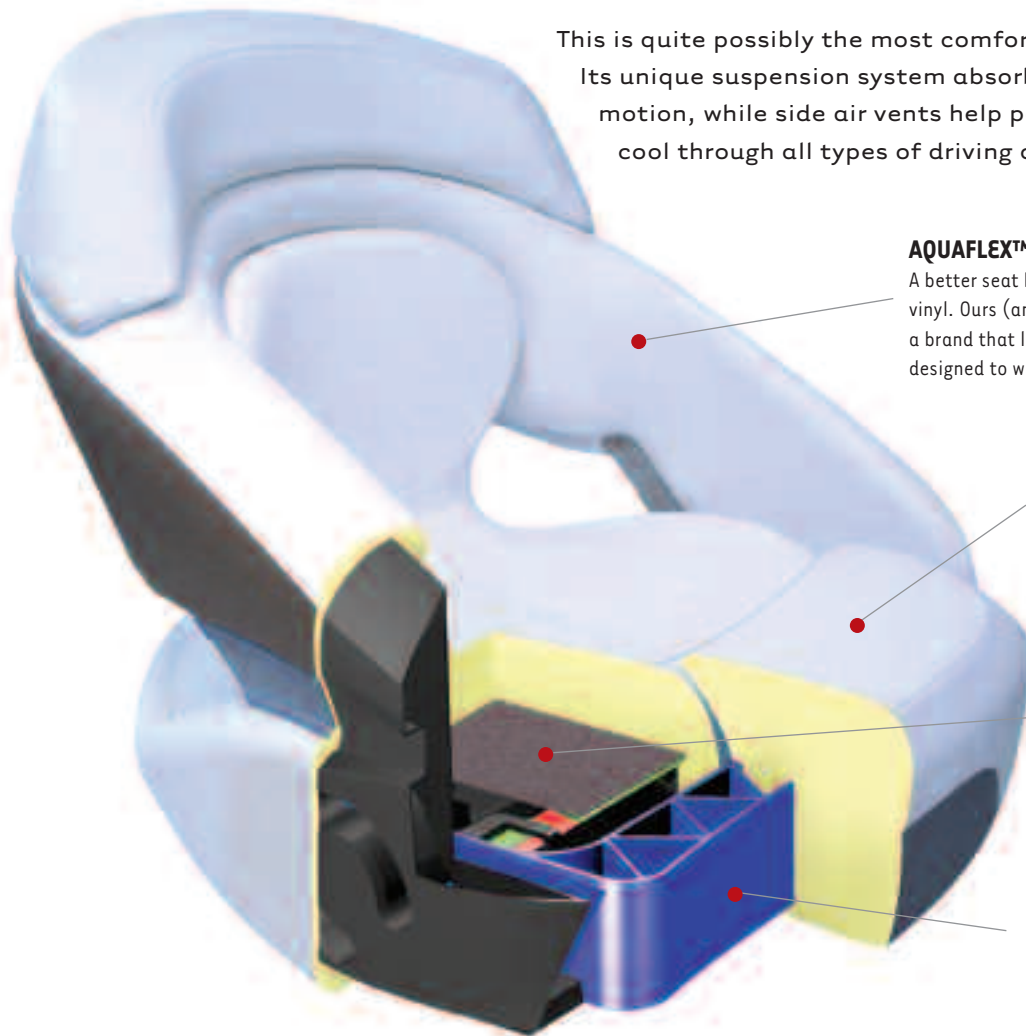
From flotation foam to vinyl ester barrier coat, the layers of a Four Winns hull and deck have been carefully engineered for maximum strength, durability, and yes, beauty.

LAMINATION SCHEDULE

- | | |
|-----------------------------------|---|
| 1 Premium gel coat | 7 Woven roving |
| 2 Vinyl ester barrier coat | 8 Fiberglass schedule in high load areas |
| 3 Fiberglass skin coat | 9 Woven roving in high load areas |
| 4 Fiberglass schedule | 10 Selective coring |
| 5 Woven roving | 11 Flotation foam |
| 6 Fiberglass schedule | |



COMFORTRIDE™ SEAT



This is quite possibly the most comfortable marine seat ever. Its unique suspension system absorbs the impact caused by motion, while side air vents help passengers keep their cool through all types of driving conditions.

AQUAFLEX™ PREMIUM VINYL

A better seat begins with a better grade of vinyl. Ours (and ours alone) is pure Aquaflex – a brand that looks and feels like leather but is designed to withstand a marine environment.



FLIP-UP BOLSTER

Take a stand for comfort! This padded bolster flips up for drivers who prefer, at times, to stand, lean against, or sit on the bolster.

SUSPENSION SYSTEM

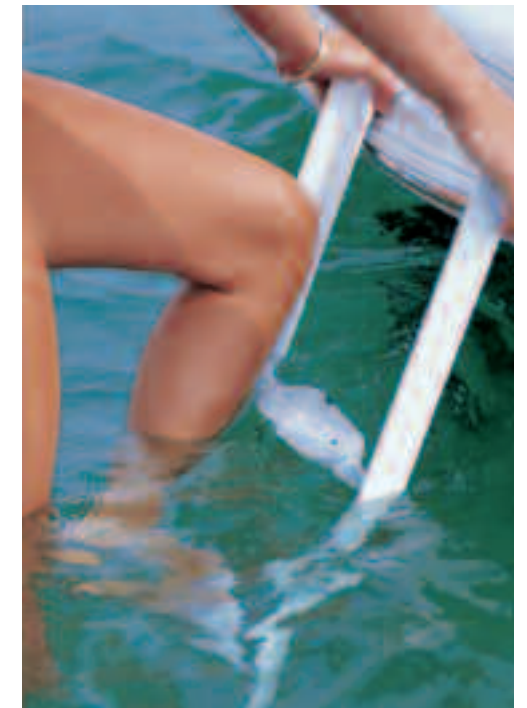
Your car has shock absorbers; your boat has "chop absorbers." The underlying support system makes the ride more comfortable.

DURABLE SEAT BASE

Impervious to moisture, this high density seat base provides the framework and keeps you sitting pretty for years to come.

FOUR WINNS' LADDER: PERFECTION WITHIN REACH

Arch enemies, beware! The new, wider rungs on Four Winns boarding ladders make barefoot boarding more comfortable and secure. Now, if we could just figure out a way to make barefoot skiing as easy...





IT'S WHAT'S INSIDE...

Every boat looks good in the showroom. So how do you tell the good from the great? What are the qualities that make one boat the "marrying kind"? One way to know for sure is to look *beyond* looks and study the details. Storage...not only how much, but what kind? And how is it finished? Hardware...what does the manufacturer use on the *other* side — the side you almost never see? And what about the ladder? Is it an afterthought? Or an extension, literally, of the boat's carefully thought-out design? So go ahead. Look closely. Because Funship buyers have no fear of commitment.



A CAPACITY FOR FUN

It's not just that there is an incredible amount of storage on these boats, it's that it's the right **kind** of storage for what you do. Coolers. Wake boards. Life vests. When you really look into things, you'll see that nothing compares to a Funship.

COCKPIT COOLER



TRANSOM STORAGE



INFLOOR SKI LOCKERS



UNDER SEAT STORAGE

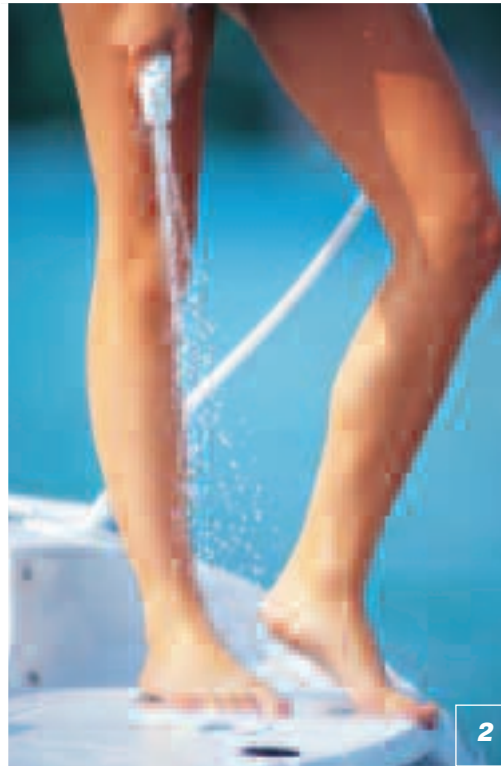


ANCHOR LOCKER/LADDER





1



2



3



4



5



6

1 EXTENDED SWIM PLATFORM Extended family? The extra wide swim platform accommodates everyone's personal space requirements. **2 FORWARD/AFT SHOWERS** Wash down to keep your boat clean! **3 BOW BOARDING LADDER** It's an idea whose time has come — a ladder that lets you board at the bow. Great for beach situations. **4 WALK-THRU** No need to climb over the sidewalls. Simply step from dock to walk-thru area. **5 COCKPIT TABLE** This social table pops into place when needed, and stows in a vinyl bag when not in use. **6 TILT STEERING** Because *everyone* will want to drive.

PRECIOUS METAL



STAINLESS STEEL FITTINGS

You'll appreciate the strength, durability and beauty of stainless steel cleats, lifting eyes, rails and other hardware for years to come. It's low maintenance, too!



STAINLESS STEEL RUB RAIL

Hull and deck are triple fastened with stainless steel screws, sealed with polyurethane, and topped with a rugged stainless steel insert.



THRU-BOLTED HARDWARE

Four Winns® knows it's not just the parts that show that matter. That's why, if you could peek inside, you'd find heavy duty, engineered hardware on the *underside* of the fiberglass. Quality, thru and thru.



WHAT'S YOUR STYLE?

Funships, like the people who own them, come in all sizes, colors and personalities. Now you can take the same great Funship platform and customize it to reflect your individual taste. Choose from available sport graphics (below), standard graphic (bottom left) or hull accent stripe (bottom right). Match your tow vehicle. Your wakeboard bindings. Your favorite team. Beauty is in the eye of the beholder. And lo and behold, there's a Funship that's just your style. For more information on available color schemes, visit our web site: www.fourwinns.com.

OPTIONAL SPORT GRAPHIC



GRAPHIC OPTIONS

Historically, deck boats have been more practical than pretty – until now. Four Winns® presents three great looks. Multiply these by six great colors (or all-white) and you can have a Funship that's as unique as you are. Hull accent tape (far right) can be ordered in a matching or contrasting (shown) color.

STANDARD GRAPHIC



HULL ACCENT TAPE



COLOR OPTIONS

Order your Funship in any of these six great colors, or all-white. Yellow boats will feature a black trailer and canvas.



NAVY



RED



GREEN



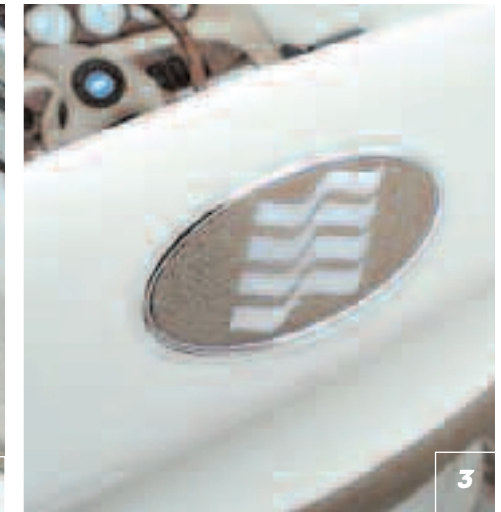
SANDSTONE



BLACK



YELLOW

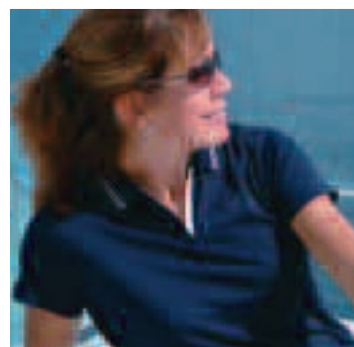


1 TOP-STITCHED UPHOLSTERY With detailing like this, Funship™ seats are pretty and practical. **2 CORIAN® COUNTERTOP** Many Funship models come with a stylish and practical solid surface serving area. **3 SEAT EMBLEM** Attention to detail, Four Winns-style. **4 CHROME DESIGNATOR** There's nothing like the glint of a shiny chrome nameplate to invoke your pride of ownership. **5 MONOGRAMMED DOCKLINE** Even your dock lines can make a statement; for this and other Four Winns logo'd items, visit your Four Winns dealer or the Winngear section of our web site. **6 CHROME BEZEL GAUGES** Framed in chrome, these new Faria gauges provide the information you need to pilot your Funship. **7 WAKEBOARD TOWER** Raise the bar — or the towing bar — on your fun with an optional wakeboard tower package.

Equipment shown may be optional or not available on some models.

WINN GEAR

QUALITY FOUR WINNS
CLOTHING & ACCESSORIES



Wear the Four Winns flags with pride. Ask your dealer about Winngear logo'd items, or visit the Winngear section of our web site, www.fourwinns.com.



A STEP BEYOND ORDINARY

your fun very seriously. New stern drive power packages are more reliable and fuel efficient. Sophisticated software systems help designers pack more functionality into every Funship. And new technologies, such as satellite entertainment systems ensure that your fun is uninterrupted.

From the modified vee hull design to the latest design-matched propulsion systems, Funships take your fun very seriously. New stern drive power packages are more reliable and fuel efficient. Sophisticated software systems help designers pack more functionality into every Funship. And new technologies, such as satellite entertainment systems ensure that your fun is uninterrupted.

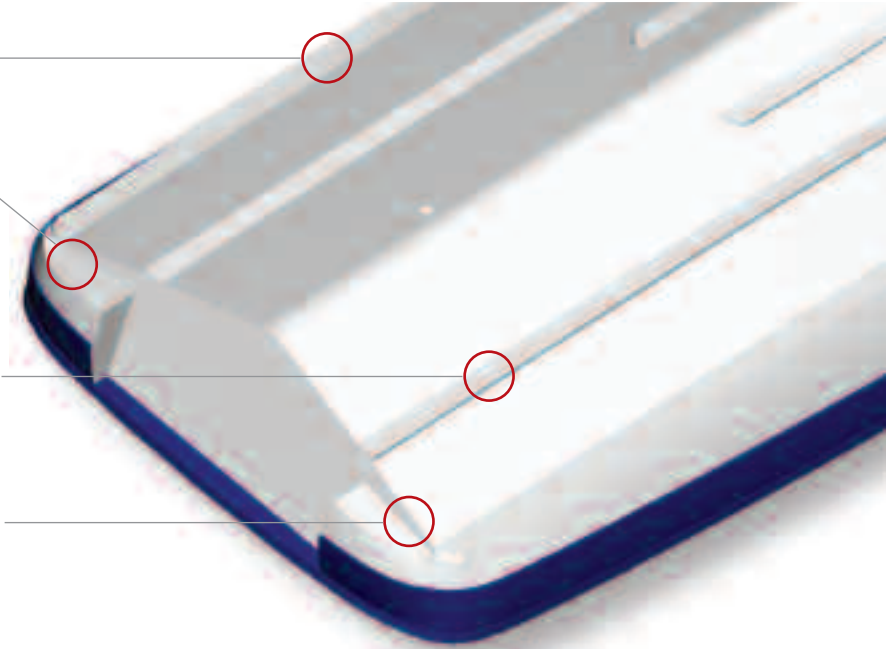


The unique shape of this chine gives the boat its large stable footprint.

"After pods" help the boat plane more quickly, like a set of trim tabs.

The angle of the rise in the boat's hull creates a smooth ride.

A stepped running surface reduces the friction/drag while underway.

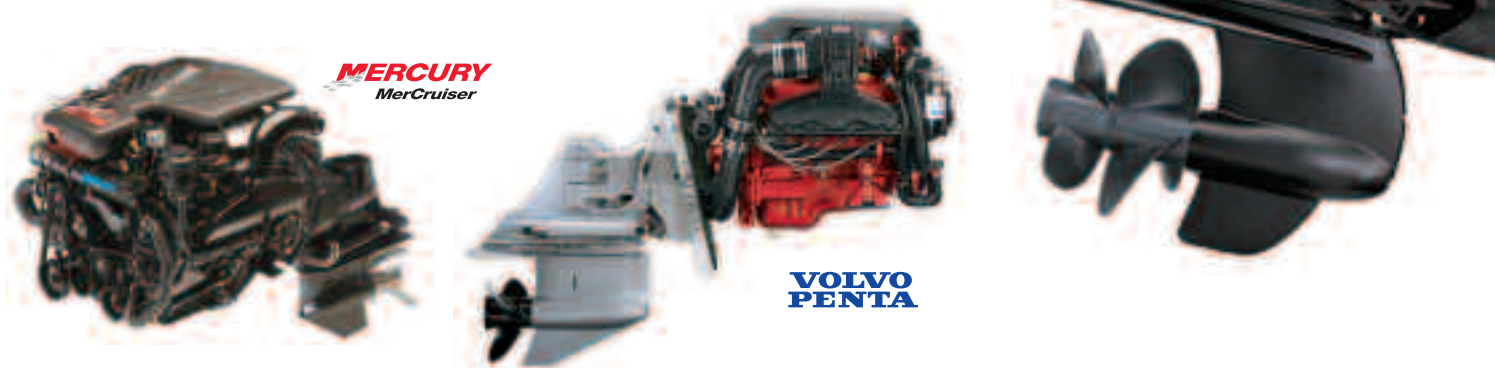


MODIFIED VEE HULL

If you thought you had to sacrifice a certain amount of performance or comfort to get the space you need, think again. Each Funship running surface incorporates aspects of Four Winns' patented Stable Vee® hull design. The result? Zero to wide open and zero second thoughts.

POWERFUL PERFORMANCES

Today's marine engines monitor internal functions and automatically optimize fuel mixture and timing, resulting in more power and efficiency. Recent innovations in propulsion such as the Ocean Series offers superior corrosion resistance, ease of maintenance, internal corrosion protection and more. Four Winns offers a broad array of propulsion options; your dealer can help you decide what's best for the way you boat.



ADVANCED DESIGN

Four Winns utilizes the latest computer-aided design technology and ergonomics expertise to ensure maximum comfort for all passengers.



COMMERCIAL-FREE SATELLITE STEREO MEANS SIRIUS ENTERTAINMENT

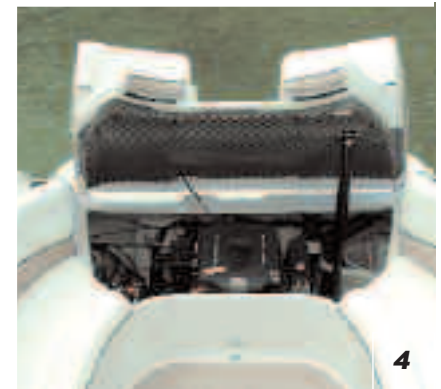


Serious music aficionados, sports fans, talk radio junkies and more can stay connected to their genre. All Four Winns® Boats are equipped with a SIRIUS satellite entertainment system with a **FREE 12-month subscription.**†

†Dealer activation required.
See your Four Winns representative for details.

CLARION® STEREO/CD PLAYER

Your new Four Winns comes equipped with a Clarion Watertight Xtreme AM/FM Stereo with CD player which has been designed for demanding conditions. A stereo upgrade and special sound equipment for tower models are also available.



1 NEW HELM DESIGN A new titanium-look steering wheel is complemented by a woodgrain-accented instrument panel and chrome bezel instruments. **2 EMBOSSED LOGO WAKEBOARD TOWER** Sweet! The latest tower carries your wakeboards as effortlessly as it carries the Four Winns nameplate. **3 DOCKING LIGHTS** When docking in low light situations, docking lights will show you the way! **4 ENGINE ACCESS** Need to check your engine oil? It's as easy as opening the hood of your car, thanks to gas assisted struts or the optional (shown) electric lift.

Equipment shown may be optional or not available on some models.



SURE-LOAD™ TRAILERS **THE BEST OF HAUL**

Sure-Load trailers are the envy of anyone who has ever launched a boat. And the only way to get one is to buy a Four Winns. That's because Four Winns® manufactures its own trailers. The low-profile design provides superior stability and fuel economy, and the carpeted bunks make misalignment virtually impossible. Back the trailer down — release the strap — and float the boat off. It's that simple, and so is the process for loading. A Sure-Load trailer is superior when stored, too, thanks to a unique, swing-away tongue design that reduces the amount of storage space required. A top-of-the-line boat deserves the top-of-the-line trailer: Sure-Load by Four Winns.



ALUMINUM WHEELS

Like the look of those shiny new wheels? Get used to it. The optional aluminum wheels boast a sporty look that lasts and lasts. Also available on the spare tire option.



SPARE TIRE

Let the good times roll, and don't let a flat tire slow you down. An optional spare tire that mounts on your boat's trailer helps you get back on the road as quickly as possible.



1



2



3



4



5



6

GREAT BOAT, GREAT TRAILER: IT'S A PACKAGE DEAL

The right trailer makes everything easier, which is why we build our own. It's simply the best for your new Funship. Note: Trailers are color-matched to the boats they're built to carry. However, yellow boats feature a black trailer and canvas.



1 SWING-AWAY TONGUE Short on space? This clever design reduces the trailer storage length by several feet.

2 WIRING HARNESS This handy harness connects to your vehicle to activate brakes and turn signals, and disengages brakes when backing up.

3 BOW ROLLER Natural color provides protection from marks or scuffs.

4 DISC BRAKES Boost your braking power with standard disc brakes.

5 TRAILER LIGHTS Sure-Load™ lights have been designed for frequent submersion into water.

6 TRAILER COUPLER Heavy-duty galvanized steel forms the connection between tow vehicle and trailer. It features safety chains or cables and surge brakes.

NEW RUGGED DUTY TOWING PACKAGE OPTION



Includes tandem axle, six-lug wheel, heavy duty tires and electric over hydraulic brakes

WINNING EDGE OWNER PROTECTION A LIFETIME OF PEACE OF MIND

own your boat on structural components of the hull and deck...five (5) years against osmotic blistering of the hull...three (3) years on non-structural parts and components...one (1) year against cracking, crazing, or fading of the exterior gel coat finish. It's proof positive of our confidence in our products. Unlike some limited warranties, Winning Edge is transferable to the next owner, which makes your boat more valuable, too. *Warranty coverage varies on boats sold outside the U.S.*

Lifetime
Structural components of the
hull and deck

5 YEARS
Osmotic hull
blistering

3 YEARS
Non-structural
parts and
components

1 YEAR
Against cracking, crazing,
or fading of the
exterior gel coat finish



Dare to compare, and you'll find that Four Winns® has one of the finest – if not the finest – owner protection plans in the industry. Our Winning Edge Owner Protection Plan gives you added peace of mind for as long as you

FOUR WINNS PROFESSIONAL MARINE RETAILER



The Four Winns difference continues for as long as you own your boat. Your Four Winns Professional Marine Retailer is your link to one of the most comprehensive factory support systems in boating.

See your Four Winns Dealer for complete warranty information.

CUSTOMER SUPPORT

Four Winns invests extensively in customer support systems. For example, our parts stocking program helps dealers maintain inventory of frequently used items, so you don't have to wait too long to get your boat back. Four Winns also compensates dealers fairly for warranty work performed, so your boat's repair is always first-rate. Four Winns' ever-expanding web site includes valuable historical product information, plus answers to frequently asked questions and more.



2005 WEBSITE AND INTERACTIVE DVD



Our boats are loaded with great stuff – often more than we can explain in a few printed pages. To learn more about Four Winns and its exceptional line of deck boats, ask your dealer to provide you with a copy of the Interactive Catalog on DVD. And don't forget to visit us on the web for special promotions and product details: www.fourwinns.com.



REAL-WORLD PRODUCT TESTING

Winds are out of the north, and the white caps are frothing steadily forth. It's time to go boating – if you're a Four Winns test driver, that is. Four Winns tests its products in all kinds of conditions, performing all sorts of maneuvers, including some you may not want to try on your own!



THE ONLY RECREATIONAL BOAT COMPANY TO RECEIVE THREE CSI AWARDS THREE YEARS IN A ROW!

In 2004, Four Winns® Boats was the only recreational boat company to receive CSI awards in three separate categories, including deck boats. Flattered? Yes, but more importantly, we're hoping to achieve high marks with a very important member of the boat buying public: you! Your vote counts with us, whether or not you receive a survey. So send us your comments or suggestions via email to: boating@fourwinns.com.



Member of
National Marine Manufacturers Association



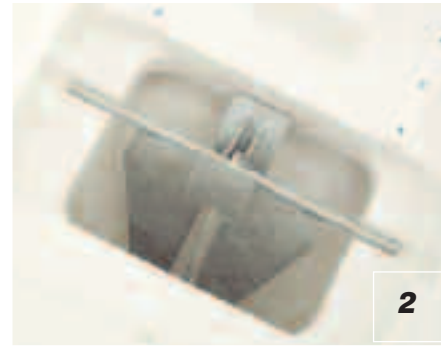
FUNSHIP™ SERIES

194 > 214 > 234 > 264

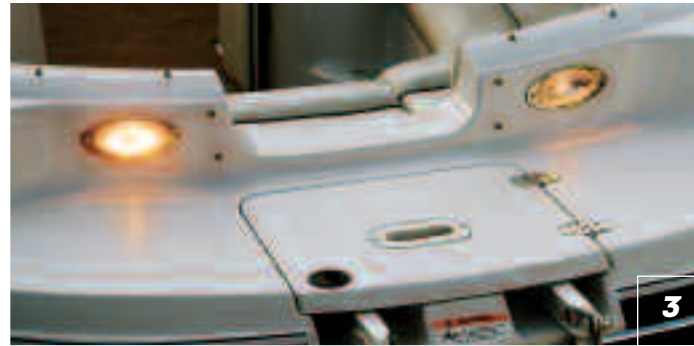
Deciding which length to buy may be difficult, but choosing a Four Winns® Funship has never been easier. Only Funship offers you this level of standard features, the finest construction quality, our exclusive Sure-Load custom-matched trailer, and more.



1



2



3



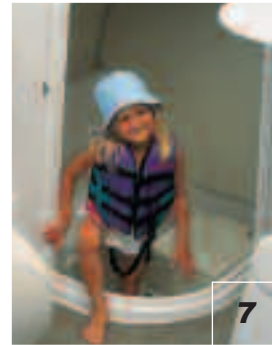
4



5



6



7



8



9



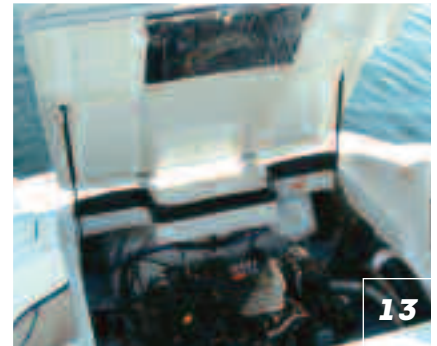
10



11



12



13

1 FORWARD/AFT SHOWERS Spray away! You've got 12 gallons of fresh water to keep things clean. **2 ANCHOR STORAGE** Keep your anchor secure and handy. **3 DOCKING LIGHTS** Docking lights are standard, except on the 194. **4 COOLER** Beverages are close at hand — literally. **5 STORAGE AREAS** One large or two smaller storage areas at the transom keep your Funship neat. **6 TILT STEERING** Four Winns makes the driving simple for everyone with tilt steering. **7 PORTA POTTI ENCLOSURE** A feature everyone is sure to appreciate (NA on 194).

8 UNDER SEAT STORAGE Storage is everywhere you look! **9 SATELLITE ENTERTAINMENT** A hundred or more commercial-free channels at your fingertips. **10 REMOVABLE COOLER** It's big enough for a bevy of beverages. **11 COMPASS** You'll know where you're going — and how to get back again — with this classic compass. **12 WALK-THRU** Step right up...or actually, step right through the center or side. **13 ENGINE LIFT** Gas-assisted struts make accessing the engine as easy as lifting your car's hood.

FUNSHIP™ EXTRA VALUE STANDARD FEATURES

What many boat manufacturers consider optional, Four Winns® considers essential to your boating fun. That's why so many premium features are standard on most Funships. See your dealer for details.

- **Aquaflex™ vinyl**
- **Boarding ladders, forward & aft with wide rungs and deep-reach extension**
- **Canvas, bimini top**
- **Clarion® AM/FM/CD player, w/removable faceplate and remote**
- **Cockpit carpet, 40-oz. snap-in**
- **Cooler, 36-qt., removable**
- **Compass**
- **Depth sounder**
- **Docking lights***
- **Engine hatch, gas-assisted struts**
- **Fiberglass liner**
- **Graphics package**
- **Premium gel coat in six color choices**
- **Rub rail, rigid white vinyl w/stainless steel insert**
- **Shipping cover** (except Tower models)
- **Showers, forward & aft***
- **Stainless steel top hardware**
- **Steering, tilt wheel**
- **SIRIUS® satellite entertainment†**
- **Table with mount, aft**
- **Trailer, Sure-Load™ custom-matched**
- **Walk-thru transom**
- **Winning Edge Owner Protection Plan**

* Optional on 194.

† Dealer activation required.





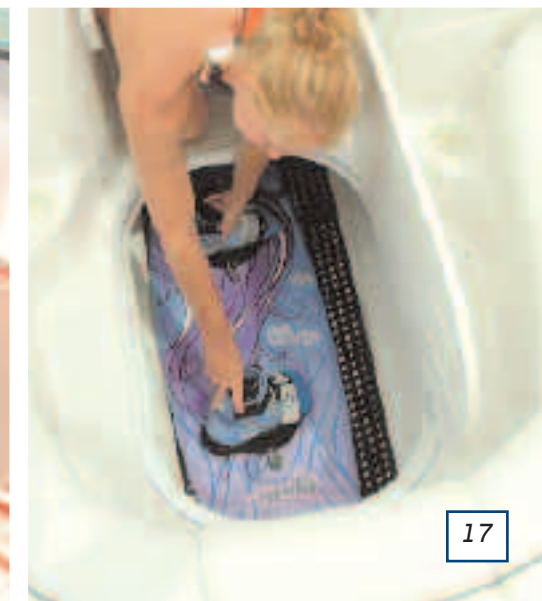
SPECIFICATIONS

LOA	21'2" / 6.45 M
BEAM	8'6" / 2.59 M
DEADRISE	17°
DRAFT – DRIVE DOWN	30" / 76 CM
FUEL CAPACITY	50 GAL / 189 L
WATER CAPACITY	12 GAL / 45 L
MAX. CAPACITY	1,700 LBS / 771 KG
APPROX. BOAT & ENGINE WEIGHT	3,690 TO 3,850 LBS 1,670 TO 1,750 KG
TRAILER WEIGHT	1,021 LBS / 459 KG



194 FOUR WINNS® FUNSHIP

Funship is a social animal – ready to host your gang at a moment’s notice. Standard seating includes a huge wraparound stern lounge plus dual bucket seats with flip-up bolsters. There’s room, too, for all the gear that accompanies a crowd...wakeboards...PFDs...snorkel gear...cold drinks, and more. A cockpit sink means freshwater access anytime. Got friends? Bring 'em on! The Four Winns 194 Funship is a real crowd pleaser.



214 FOUR WINNS® FUNSHIP



Even without optional equipment, a 214 Funship model is anything but basic.

From the bow boarding ladder to the generous extended swim platform, the 214 is appointed with many hard-to-find features. This year, you also have the option of terrific new sport graphics and wakeboard tower packages. An enclosed portable head, new wide rung ladder, refreshment center and loads of storage are standard. In fact, the only thing there may not be room for? Improvement!

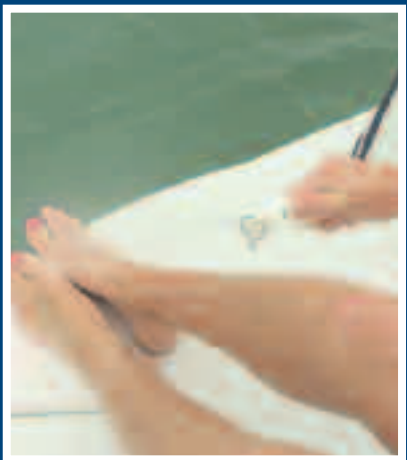


SPECIFICATIONS

LOA	23'8" / 7.22 M
BEAM	8'6" / 2.44 M
DEADRISE	17°
DRAFT - DRIVE DOWN	31" / 79 CM
FUEL CAPACITY	50 GAL / 189 L
WATER CAPACITY	12 GAL / 45 L
MAX. CAPACITY	1,900 LBS / 862 KG
APPROX. BOAT & ENGINE WEIGHT	4,240 TO 4,360 LBS 1,920 TO 1,980 KG
TRAILER WEIGHT	1,212 LBS / 550 KG



**VOLVO
PENTA**



234 FOUR WINNS® FUNSHIP

When Four Winns designs a deck boat, they pull out all the stops. The 234 Funship is a prime example. Optional fill-in cushions give the bow more wow. Showers forward and aft let you wash down your feet, your snorkel, or your Uncle Vern.

The solution to the age-old problem of where to change into your bathing suit? In the handy enclosed head with porta potti, thank you very much. For other important details, visit our web site, www.fourwinns.com.

SPECIFICATIONS

LOA	25'6" / 7.77 M
BEAM	8'6" / 2.59 M
DEADRISE	17°
DRAFT – DRIVE DOWN	33" / 84 CM
FUEL CAPACITY	65 GAL / 246 L
WATER CAPACITY	12 GAL / 45 L
MAX. CAPACITY	2,050 LBS / 930 KG
APPROX. BOAT & ENGINE WEIGHT	4,860 TO 4,900 LBS / 2,200 TO 2,220 KG
TRAILER WEIGHT	1,641 LBS / 745 KG



264 FOUR WINNS® FUNSHIP

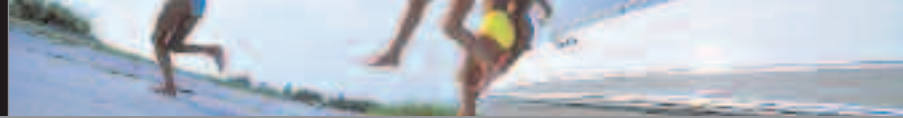
There's a whole lot to love about a 264 Funship. Effortless acceleration...space for a dozen or so of your closest friends...freshwater showers at the bow and stern...an optional stereo remote at the swim platform...walk-thru doors to minimize the flow of air through the cockpit...step-thru sidewalls and transom...premium grade gelcoat and Aquaflex™ vinyl. If you thought living on the lake was good, wait until you experience the good life aboard a Funship deck boat.



SPECIFICATIONS

LOA	28'2" / 8.59 M
BEAM	8'6" / 2.59 M
DEADRISE	17°
DRAFT – DRIVE DOWN	34" / 86 CM
FUEL CAPACITY	80 GAL / 302 L
WATER CAPACITY	12 GAL / 45 L
MAX. CAPACITY	2,300 LBS / 1,043 KG
APPROX. BOAT & ENGINE WEIGHT	5,170 TO 5,410 LBS 2,340 TO 2,450 KG
TRAILER WEIGHT	1,711 LBS / 776 KG

**VOLVO
PENTA**



What many boat manufacturers consider optional, Four Winns® Boats considers essential to your boating fun. That's why you'll find so many premium features standard on every Four Winns. See the [Extra Value Standard Features](#) highlighted in blue throughout the following listings.

STANDARDS HULL/DECK

- Anchor locker w/hidden wide step ladder
- Bow and stern eyes, stainless steel
- Cleats, stainless steel (4)
- Designators, dome style
- Engine vents, transom mounted
- Gel band color choices: Navy, Red, Green, Sandstone, Black, Yellow
- Gel coat, premium
- Gel scheme, two tone or all white
- Graphics, standard
- Horn, concealed
- Meets or exceeds applicable USCG regulations
- Navigation lights
- NMMA certification
- Passenger assist handle, stainless steel, transom
- Rub rail, rigid white vinyl w/stainless steel insert
- Shower, forward
- Ski tow, stainless steel
- Step pads, skid resistant
- Swim platform, aft, integrated
 - Ladder, angled, deep-reach with wide step pads
 - Skid-resistant surface
- Swim platform, forward
 - Ladder, angled, deep-reach with wide step pads
 - Skid-resistant surface
- Transom storage locker
- Walk-thru storage
- Windshield w/walk-thru
 - Full aluminum frame
 - Safety glass

COCKPIT

- Aquaflex™ vinyl
- Beverage holders (8)
- Carpet, 40 oz., snap-in
- Cooler, removable, 36-qt.
- Courtesy lights
- Engine compartment
 - Engine hatch, gas assist lift
 - Fiberglass motorhood, insulated
 - Gel-coated bilge
- Fiberglass liner, self-draining
- Floor, skid-resistant
- Forward entry
- Ice chest, beneath bow seat
- Refreshment center
 - Sink w/pressurized water
 - Trash receptacle
- Seating, bow
 - Bow seats, removable
 - Canted wrap-around backrests w/removable cushions
- Seating, cockpit
 - Bucket seats, ComfortRide, flip-up bolster, adjustable
 - Canted wrap-around backrests w/removable cushions
 - U-wrap stern seating
- Ski locker, in-floor
 - Hinged lid, gas assist lift
 - Large enough for skis, kneeboards or wakeboards
 - Raised floor w/rubber mesh mat
- Speakers, Clarion® (2)
- Stereo, Clarion® AM/FM/CD player
 - SIRIUS™ satellite stereo system w/1-year subscription†
- Storage, bow
 - Beneath seats
- Storage, cockpit
 - Beneath U-wrap seating
- Walk-thru transom

HELM AREA

- Burlwood trim
- Depth sounder w/shallow water alarm
- Emergency engine shut-off
- Instrumentation, Faria, fog-resistant w/chrome bezels
 - Fuel gauge
 - Oil pressure
 - Speedometer
 - Tachometer
 - Temperature gauge
 - Trim gauge
 - Volt meter

- Lighted switches
- Receptacle, 12VDC
- Steering wheel, tilt

ENGINE/SYSTEMS/DRIVE

- Battery, Interstate®
- Bilge blower
- Bilge pump, automatic
- Horn, engine warning
- Potable water, pressurized, 12 gal.
- Power steering
- Power trim and tilt
- Wire harness
 - Routed through PVC conduit in floor

CANVAS

- Bimini top with stainless steel hardware

TRAILER

- Integrated step pads
- Keel rollers
- Radial tires
- Submersible lighting
- Sure-Load™ custom-matched trailer
 - Disc brakes
 - Tongue, swing-away
- Tandem axle
 - Single axle brakes
- Tie-down straps (3)
- Tongue jack, swivel
- Treated bunks, carpeted (4)
- Treated side guides, carpeted
- Welded tube construction, 11-gauge
- Welded winch post

CUSTOMER CARE

- Shipping cover (NA Tower models)
- Winning Edge Owner Protection Plan



OPTIONS HULL & DECK

- Bow scuff plate
- Cleats, pull-up
- Docking lights
- Graphics, sport
- Wakeboard Tower (w/custom bimini top)
- Wakeboard Tower Deluxe (Includes tower, 2 board racks, 2 tower speakers, Clarion amplifier, 10" woofer and custom bimini top)
- Wakeboard tower board rack
- Windscreen, plexiglass

BOW/COCKPIT/HELM

- Engine hatch, electric lift
- Fill-in cushion, bow
- Steering wheel, woodgrain/sandstone
- Stereo remote at swim platform
- Stereo upgrade (Includes: tweeters, Clarion amplifier and a 10" woofer)
- Step fill-in w/backrest
- Table, cockpit w/mount
- Walk-thru doors

ENGINE/SYSTEMS/DRIVE

- Fresh water cooling (OSi drives only)
- Prop, stainless
- Remote oil filter (std. on fuel injected engines)

CANVAS

- Cockpit and forward cover
- Forward connector* (NA w/windscreen)
- Mooring cover*
 - * NA w/Wakeboard Tower packages

TRAILER

- Brakes, tandem
- Galvanized trailer
- Rugged towing package
- Spare tire and wheel
- Spare tire and wheel, aluminum or galvanized
- Wheels, aluminum

POWER

Volvo-Penta® Stern Drives

- 4.3 GL/SX 190 hp
- 4.3 GXi/SX 225 hp
- 4.3 GXi/DP 225 hp
- 5.0 GL/SX 220 hp
- 5.0 GL/DP 220 hp
- 5.0 GXi/SX 270 hp
- 5.0 GXi/DP 270 hp
- 5.0 OSi/XDP 270 hp

MerCruiser® Stern Drives

- 4.3 L Alpha 190 hp
- 4.3 MPI Alpha 220 hp
- 5.0 L Alpha 220 hp
- 5.0 MPI Alpha 260 hp
- 5.0 MPI/Bravo I 260 hp



LOA 21'2" / 6.45 M

BEAM 8'6" / 2.59 M

DEADRISE 17°

DRAFT – DRIVE DOWN 30" / 76 CM

FUEL CAPACITY 50 GAL / 189 L

WATER CAPACITY 12 GAL / 45 L

MAX. CAPACITY 1,700 LBS / 771 KG

APPROX. BOAT & ENGINE WEIGHT 3,690 TO 3,850 LBS
1,670 TO 1,750 KG

TRAILER WEIGHT 1,012 LBS / 459 KG



Four Winns Extra Value Standard Features are highlighted in blue throughout the following listings.

STANDARDS HULL/DECK

- Anchor locker w/hidden wide step ladder
- Bow and stern eyes, stainless steel
- Bow rails, thru-bolted, stainless
- Cleats, stainless steel (6)
- Designators, dome style
- Docking lights
- Engine vents, transom mounted
- Gel band color choices: Navy, Red, Green, Sandstone, Black, Yellow
- Gel coat, premium
- Gel scheme, two tone or all white
- Graphics, standard
- Horn, concealed
- Meets or exceeds applicable USCG regulations
- Navigation lights
- NMMA certification
- Passenger assist handle, stainless steel, transom
- Rub rail, rigid white vinyl w/stainless steel insert
- Shower, forward & aft
- Ski tow, stainless steel
- Step pads, skid-resistant
- Swim platform, aft, extended
 - Ladder, angled, deep-reach with wide step pads
 - Skid-resistant surface
 - Storage locker
- Swim platform, forward
 - Ladder, angled, deep-reach with wide step pads
 - Skid-resistant surface
- Transom storage locker
- Walk-thru storage
- Windshield w/walk-thru
 - Full aluminum frame
 - Safety glass
 - Stainless steel supports

COCKPIT

- Aquaflex™ vinyl
- Beverage holders (8)
- Carpet, 40 oz., snap-in
- Cooler, removable, 36-qt.
- Courtesy lights
- Engine compartment
 - Engine hatch, gas assist lift
 - Fiberglass motorhood, insulated
 - Gel-coated bilge

- Fiberglass liner, self-draining
- Floor, skid-resistant
- Forward entry
- Head, enclosed w/porta potti
 - Fiberglass liner
 - Opening port light w/screen
 - Overhead lighting
- Ice chest, beneath bow seat
- Refreshment center, bow
 - Built-in ice chest
 - Corian® countertop
 - Sink w/pressurized water
 - Trash receptacle
- Seating, bow
 - Bow seats, removable
 - Canted wrap-around backrests w/removable cushions
- Seating, cockpit
 - Bucket seats, ComfortRide, headrests, flip-up bolster, adjustable
 - Canted wrap-around backrests w/removable cushions
 - U-wrap stern seating
- Ski locker, in-floor
 - Hinged lid, gas assist lift
 - Large enough for skis, kneeboards or wakeboards
 - Raised floor w/rubber mesh mat
- Speakers, Clarion® (4)
- Stereo, Clarion® AM/FM/CD player
 - SIRIUS™ satellite stereo system w/1-year subscription†
- Storage, bow
 - Beneath seats
- Storage, cockpit
 - Beneath U-wrap seat
 - Helm compartment
- Table w/mount, cockpit
- Walk-thru doors
- Walk-thru transom

HELM AREA

- Burlwood trim w/silver accent
- Compass
- Depth sounder w/shallow water alarm
- Emergency engine shut-off
- Instrumentation, Faria, fog-resistant w/chrome bezels
 - Fuel gauge
 - Oil pressure
 - Speedometer
 - Tachometer
 - Temperature gauge
 - Trim gauge
 - Volt meter
- Lighted switches

- Receptacle, 12VDC
- Steering wheel, tilt

ENGINE/SYSTEMS/DRIVE

- Battery, Interstate®
- Bilge blower
- Bilge pump, automatic
- Horn, engine warning
- Potable water, pressurized, 12 gal.
- Power steering
- Power trim and tilt
- Wire harness
 - Routed through PVC conduit in floor

CANVAS

- Bimini top with stainless steel hardware

TRAILER

- Integrated step pads
- Keel rollers
- Radial tires
- Submersible lighting
- Sure-Load™ custom-matched trailer
 - Disc brakes
 - Tongue, swing-away
- Tandem axle
 - Single axle brakes
- Tie-down straps (3)
- Tongue jack, swivel
- Treated bunks, carpeted (4)
- Treated side guides, carpeted
- Welded tube construction, 11-gauge
- Welded winch post

CUSTOMER CARE

- Shipping cover (NA Tower models)
- Winning Edge Owner Protection Plan



OPTIONS HULL & DECK

- Bow scuff plate
- Cleats, pull-up
- Graphics, sport
- Wakeboard Tower (w/custom bimini top)
- Wakeboard Tower Deluxe (Includes tower, 2 board racks, 2 tower speakers, Clarion amplifier, 10" woofer and custom bimini top)
- Windscreen, plexiglass

BOW/COCKPIT/HELM

- Engine hatch, electric lift
- Fill-in cushion, bow
- Head, pump out
- Steering wheel, woodgrain/sandstone
- Stereo remote at swim platform
- Stereo upgrade (Includes: tweeters, Clarion amplifier and a 10" woofer)
- Table, cockpit w/mount

ENGINE/SYSTEMS/DRIVE

- Batteries, dual w/switch
- Engine flush-out kit
- Fresh water cooling (OSi drives only)
- Neutra-Salt engine flush system[§]
- Prop, stainless
- Remote oil filter (std. on fuel injected engines)

CANVAS

- Camper canvas*
- Cockpit and forward cover
- Forward connector* (NA w/windscreen)
- Mooring cover*
- Windshield connector (clear) *NA w/Wakeboard Tower packages

TRAILER

- Brakes, tandem
- Galvanized trailer
- Rugged towing package
- Spare tire and wheel
- Spare tire and wheel, aluminum or galvanized
- Wheels, aluminum

POWER

Volvo-Penta® Stern Drives

- 5.0 GL/SX 220 hp
- 5.0 GL/DP 220 hp
- 5.0 GXi/SX 270 hp
- 5.0 GXi/DP 270 hp
- 5.0 OSi/XDP 270 hp
- 5.7 Gi/SX 280 hp
- 5.7 Gi/DP 280 hp
- 5.7 OSi/XDP 280 hp

MerCruiser® Stern Drives

- 5.0 L Alpha 220 hp
- 5.0 MPI/Alpha 260 hp
- 5.0 MPI/Bravo I 260 hp
- 350 MPI/Bravo I 300 hp
- 350 MPI/Bravo III 300 hp



LOA 23'8" / 7.22 M

BEAM 8'6" / 2.44 M

DEADRISE 17°

DRAFT – DRIVE DOWN 31" / 79 CM

FUEL CAPACITY 50 GAL / 189 L

WATER CAPACITY 12 GAL / 45 L

MAX. CAPACITY 1,900 LBS / 862 KG

APPROX. BOAT & ENGINE WEIGHT 4,240 TO 4,360 LBS
1,920 TO 1,980 KG

TRAILER WEIGHT 1,212 LBS / 550 KG

234 FOUR WINNS® FUNSHIP™

Four Winns Extra Value Standard Features are highlighted in blue throughout the following listings.

STANDARDS HULL/DECK

- Anchor locker w/hidden wide step ladder
- Bow and stern eyes, stainless steel
- Cleats, stainless steel (6)
- Designators, dome style
- Docking lights
- Engine vents, transom mounted
- Gel band color choices: Navy, Red, Green, Sandstone, Black, Yellow
- Gel coat, premium
- Gel scheme, two tone or all white
- Graphics, standard
- Horn, concealed
- Meets or exceeds applicable USCG regulations
- Navigation lights
- NMEA certification
- Passenger assist handle, stainless steel, transom
- Rub rail, rigid white vinyl w/stainless steel insert
- Shower, forward & aft
- Ski tow, stainless steel
- Step pads, skid-resistant
- Swim platform, aft, extended
 - Ladder, angled, deep-reach with wide step pads
- Passenger assist handle, stainless steel, transom
 - Skid-resistant surface
 - Storage locker
- Swim platform, forward
 - Ladder, angled, deep-reach with wide step pads
 - Skid-resistant surface
- Transom storage locker (2)
- Walk-thru storage
- Windshield w/walk-thru
 - Full aluminum frame
 - Safety glass
 - Stainless steel supports

COCKPIT

- Aquaflex™ vinyl
- Beverage holders (11)
- Carpet, 40 oz., snap-in
- Cooler, removable, 36-qt.
- Courtesy lights
- Engine compartment
 - Engine hatch, gas assist lift
 - Fiberglass motorhood, insulated
 - Gel-coated bilge

- Fiberglass liner, self-draining
- Floor, skid-resistant
- Forward entry
- Head compartment
 - Fiberglass liner
 - Opening port light w/screen
 - Overhead lighting
- Head, enclosed w/porta potti
- Ice chest, beneath bow seat
- Refreshment center, bow
 - Built-in ice chest
 - Corian® countertop
 - Sink w/pressurized water
 - Trash receptacle
- Seating, bow
 - Bow seats, removable
 - Canted wrap-around backrests w/removable cushions
- Seating, cockpit
 - Bucket seats, ComfortRide, headrests, flip-up bolster, adjustable
 - Canted wrap-around backrests w/removable cushions
 - U-wrap stern seating
- Ski locker, in-floor
 - Hinged lid, gas assist lift
 - Large enough for skis, kneeboards or wakeboards
 - Raised floor w/rubber mesh mat
- Speakers, Clarion® (4)
- Starboard entry
- Stereo, Clarion® AM/FM/CD player
 - SIRIUS™ satellite stereo system w/1-year subscription†
- Storage, bow
 - Beneath seats
- Storage, cockpit
 - Beneath U-wrap seat
 - Helm compartment
 - In-floor locker
- Table w/mount, cockpit
- Transom passenger assist handle, stainless steel
- Walk-thru doors
- Walk-thru transom

HELM AREA

- Burlwood trim w/silver accent
- Compass
- Depth sounder w/shallow water alarm
- Emergency engine shut-off
- Instrumentation, Faria, fog-resistant w/chrome bezels
 - Fuel gauge
 - Oil pressure
 - Speedometer

- Tachometer
- Temperature gauge
- Trim gauge
- Volt meter
- Lighted switches
- Receptacle, 12VDC
- Steering wheel, tilt

ENGINE/SYSTEMS/DRIVE

- Battery, Interstate®
- Bilge blower
- Bilge pump, automatic
- Horn, engine warning
- Potable water, pressurized, 12 gal.
- Power steering
- Power trim and tilt
- Remote oil filter
- Wire harness
 - Routed through PVC conduit in floor

CANVAS

- Bimini top with stainless steel hardware

TRAILER

- Integrated step pads
- Keel rollers
- Radial tires
- Submersible lighting
 - Disc brakes
 - Tongue, swing-away
- Tandem axle
 - Single axle brakes
- Tie-down straps (3)
- Tongue jack, swivel
- Treated bunks, carpeted (4)
- Treated side guides, carpeted
- Welded tube construction, 11-gauge
- Welded winch post

CUSTOMER CARE

- Shipping cover (NA Tower models)
- Winning Edge Owner Protection Plan



OPTIONS HULL & DECK

- Bow scuff plate
- Cleats, pull-up
- Graphics, sport
- Wakeboard Tower (w/custom bimini top)
- Wakeboard Tower Deluxe (Includes tower, 2 board racks,

- 2 tower speakers, Clarion amplifier, 10" woofer and custom bimini top)
- Windscreen, plexiglass

BOW/COCKPIT/HELM

- Engine hatch, electric lift
- Fill-in cushion, bow
- Head, pump out
- Steering wheel, woodgrain/sandstone
- Stereo remote at swim platform
- Stereo upgrade (Includes: tweeters, Clarion amplifier and a 10" woofer)
- Table, cockpit w/mount

ENGINE/SYSTEMS/DRIVE

- Batteries, dual w/switch
- Engine flush-out kit
- Fresh water cooling (OSi drives only)
- Neutra-Salt engine flush system§
- Oil drip pan
- Prop, stainless

CANVAS

- Bimini, forward*
- Camper canvas*
- Cockpit and forward cover
- Mooring cover*
- Windshield connector, clear
 - * NA w/Wakeboard Tower packages

TRAILER

- Brakes, tandem
- Galvanized trailer
- Rugged towing package
- Spare tire and wheel
- Spare tire and wheel, aluminum or galvanized
- Wheels, aluminum

POWER

Volvo-Penta® Stern Drives

- 5.0 GXi/SX 270 hp
- 5.0 GXi/DP 270 hp
- 5.0 OSi/XDP 270 hp
- 5.7 Gi/SX 280 hp
- 5.7 Gi/DP 280 hp
- 5.7 OSi/XDP 280 hp
- 5.7 GXi/DP 320 hp
- 5.7 OSXi/XDP 320 hp

MerCruiser® Stern Drives

- 5.0 MPI/Bravo I 260 hp
- 5.0 MPI/Bravo III 260 hp
- 350 MPI/Bravo I 300 hp
- 350 MPI/Bravo III 300 hp
- MX 6.2 Bravo III 320 hp



LOA 25'6" / 7.77 M

BEAM 8'6" / 2.59 M

DEADRISE 17°

DRAFT – DRIVE DOWN 33" / 84 CM

FUEL CAPACITY 65 GAL / 246 L

WATER CAPACITY 12 GAL / 45 L

MAX. CAPACITY 2,050 LBS / 930 KG

APPROX. BOAT & ENGINE WEIGHT 4,860 TO 4,900 LBS
2,200 TO 2,220 KG

TRAILER WEIGHT 1,641 LBS / 745 KG



Four Winns Extra Value Standard Features are highlighted in blue throughout the following listings.

STANDARDS HULL/DECK

- Anchor locker w/hidden wide step ladder
- Bow and stern eyes, stainless steel
- Bow rails, thru-bolted, stainless
- Cleats, stainless steel (6)
- Designators, dome style
- Docking lights
- Engine vents, transom mounted
- Gel band color choices: Navy, Red, Green, Sandstone, Black, Yellow
- Gel coat, premium
- Gel scheme, two tone or all white
- Graphics, standard
- Horn, electric, concealed
- Meets or exceeds applicable USCG regulations
- Navigation lights
- NMMA certification
- Passenger assist handle, stainless steel, transom
- Rub rail, rigid white vinyl w/stainless steel insert
- Shower, forward & aft
- Ski tow, stainless steel
- Step pads, skid-resistant
- Swim platform, aft, extended
 - Ladder, angled, deep-reach with wide step pads
 - Passenger assist handle, stainless steel, transom
 - Skid-resistant surface
 - Storage locker
- Swim platform, forward, integrated
 - Ladder, angled, deep-reach with wide step pads
 - Skid-resistant surface
- Transom storage lockers (2)
- Walk-thru storage
- Windshield w/walk-thru
 - Full aluminum frame
 - Safety glass
 - Stainless steel supports

COCKPIT

- Aquaflex™ vinyl
- Beverage holders (9)
- Carpet, 40 oz., snap-in
- Cooler, removable, 36-qt.
- Courtesy lights
- Engine compartment
 - Engine hatch, gas assist lift
 - Fiberglass motorhood, insulated
 - Gel-coated bilge
- Fiberglass liner, self-draining
- Floor, skid-resistant
- Forward entry
- Head, enclosed w/porta potti
- Ice chest, beneath bow seat
- Refreshment center, bow
 - Cooler, removable, 36-qt.
 - Corian® countertop
 - Ice chest, integrated
 - Passenger assist handle, stainless
 - Sink w/pressurized water
 - Storage compartment
 - Trash receptacle
- Seating, bow
 - Bow seats, removable
 - Canted wrap-around backrests w/removable cushions
- Seating, cockpit
 - Bucket seats, ComfortRide, headrests, flip-up bolster, adjustable
 - Canted wrap-around backrests w/removable cushions
 - U-wrap stern seating
- Ski locker, in-floor
 - Hinged lid, gas assist lift
 - Large enough for skis, kneeboards or wakeboards
 - Raised floor w/rubber mesh mat
- Speakers, Clarion® (4)
- Starboard entry
- Stereo, Clarion® AM/FM/CD player
 - SIRIUS™ satellite stereo system w/1-year subscription†
- Storage, bow
 - Beneath seats
- Storage, cockpit
 - Beneath U-wrap seat
 - Helm compartment
 - In-floor locker
- Table w/mount, aft
- Transom passenger assist handle, stainless steel
- Walk-thru doors
- Walk-thru transom

HELM AREA

- Burlwood trim w/silver accent
- Compass
- Depth sounder w/shallow water alarm
- Emergency engine shut-off
- Instrumentation, Faria, fog-resistant w/chrome bezels
 - Fuel gauge
 - Oil pressure
 - Speedometer
 - Tachometer
 - Temperature gauge
 - Trim gauge
 - Volt meter
- Lighted switches
- Receptacle, 12VDC
- Steering wheel, tilt

ENGINE/SYSTEMS/DRIVE

- Battery, Interstate®
- Bilge blower
- Bilge pump, automatic
- Horn, engine warning
- Potable water, pressurized, 12 gal.
- Power steering
- Power trim and tilt
- Props, stainless steel
- Remote oil filter
- Wire harness
 - Routed through PVC conduit in floor

CANVAS

- Bimini top with stainless steel hardware

TRAILER

- Integrated step pads
- Keel rollers
- Radial tires
- Submersible lighting
- Sure-Load™ custom-matched trailer
 - Disc brakes
 - Tongue, swing-away
- Tandem axle
 - Single axle brakes
- Tie-down straps (3)
- Tongue jack, swivel
- Treated bunks, carpeted
- Treated side guides, carpeted
- Welded tube construction, 11-gauge
- Welded winch post

CUSTOMER CARE

- Shipping cover
- Winning Edge Owner Protection Plan



OPTIONS HULL & DECK

- Bow scuff plate
- Cleats, pull-up
- Graphics, sport

BOW/COCKPIT/HELM

- Engine hatch, electric lift
- Fill-in cushion, bow
- Head, pump out
- Steering wheel, woodgrain/sandstone
- Stereo remote at swim platform
- Stereo upgrade (Includes: tweeters, Clarion amplifier and a 10" woofer)
- Table, forward w/mount

ENGINE/SYSTEMS/DRIVE

- Batteries, dual w/switch
- Engine flush-out kit
- Fresh water cooling (OSi drives only)
- Neutra-Salt engine flush system§
- Oil drip pan

CANVAS

- Bimini, forward
- Camper canvas
- Cockpit and forward cover
- Mooring cover

TRAILER

- Brakes, tandem
- Galvanized trailer
- Rugged towing package
- Spare tire and wheel
- Spare tire and wheel, aluminum or galvanized
- Wheels, aluminum

POWER

Volvo-Penta® Stern Drives

- 5.7 Gi/DP 280 hp
- 5.7 OSi/XDP 280 hp
- 5.7 GXi/DP 320 hp
- 5.7 OSXi/XDP 320 hp
- 8.1 Gi/DP 375 hp
- 8.1 OSi/DP 375 hp

MerCruiser® Stern Drives

- 350 MPI/Bravo I 300 hp
- 350 MPI/Bravo III 300 hp
- MX 6.2 Bravo I 320 hp
- MX 6.2 Bravo III 320 hp
- 496 MG Bravo III 375 hp



LOA	28'2" / 8.59 M
BEAM	8'6" / 2.59 M
DEADRISE	17°
DRAFT – DRIVE DOWN	34" / 86 CM
FUEL CAPACITY	80 GAL / 302 L
WATER CAPACITY	12 GAL / 45 L
MAX. CAPACITY	2,300 LBS / 1,043 KG
APPROX. BOAT ENGINE WEIGHT	5,170 TO 5,410 LBS 2,340 TO 2,450 KG
TRAILER WEIGHT	1,711 LBS / 776 KG



FACTORY-MADE CANVAS
TOP PERFORMERS DAY OR NIGHT.

with additional canvas including the new forward Bimini option. All are factory-made and custom-matched to your boat's color (Exception: Yellow boats feature black canvas and all mooring covers are gray.)

Standard Bimini tops provide welcome relief from the mid-day sun. But you can extend the versatility of your Funship



MAKES PUTTING UP CANVAS A SNAP!



Good news for anyone who has ever wrestled with a cotter pin system for canvas: They're gone! This ingenious design lets you literally snap the canvas hardware in or out in seconds. It's a snap!



STANDARD BIMINI TOP



BIMINI TOP W/OPTIONAL FWD BIMINI



COCKPIT AND FORWARD



CAMPER CANVAS INCLUDES BOW CANVAS (214/234)



CAMPER CANVAS
(264)



MOORING COVER
(GRAY ONLY)



CUSTOM BIMINI TOP TOWER MODELS



CUSTOM BIMINI BOOT TOWER MODELS



FOUR WINNS® FUNSHIP™ OPTIONS

ADDING TO YOUR FUN.

1 WAKEBOARD TOWER PACKAGES Includes board racks and custom Bimini top; deluxe version also includes a stereo upgrade and tower speakers. **2 WOODGRAIN WHEEL** Add a touch of the traditional with woodgrain wheel option. **3 COCKPIT TABLE** Extend the versatility of your Funship with this removable table. **4 PULL-UP CLEATS** Stainless steel pull-up cleats are the ultimate in form and function. **5 BOW SCUFF PLATE** Protect your investment with this stainless steel scuff plate/drop lifting eye. **6 BOW FILL-IN CUSHIONS** So you can have your fun in the sun. **7 STEREO UPGRADE** Includes tweeters, amplifier and 10" woofer. **8 STEREO REMOTE** Lets you crank the tunes from the swim platform. **9 WINDSCREEN** The 194, 214 and 234 are available with this low-profile plexi windscreen. **10 GRAPHICS PACKAGES** Choose from Standard or Sport (shown) graphics packages – or a hull stripe in six different colors – to create a custom look for your Funship.

THE REST OF THE FOUR WINNS® FAMILY

HORIZON™ LE SPORT BOATS



HORIZON™ SPORT BOATS



SUNDOWNER™ CUDDY CABINS



VISTA® EXPRESS CRUISERS



FOUR WINNS BOATS, L.L.C • 925 FRISBIE STREET • CADILLAC, MI • 49601 • 231-775-1351

www.fourwinns.com

YOUR LOCAL FOUR WINNS DEALER:

FOUR WINNS HEADQUARTERS

Four Winns' eleven facilities are located in Cadillac, Michigan. Our company employs more than 800 people who staff the company's engineering, trailer fabrication, testing, cabinetry, sportboat/deckboat and cruiser manufacturing facilities.



An important note about the information in this booklet: Every effort has been made to ensure that this catalog includes complete and accurate information. However, since the time of printing, some information may have been revised. Also some equipment shown within this brochure is available at extra cost. Since we do reserve the right to make changes at any time, without notice, in prices, colors, equipment, specifications, and models, we suggest that you check with your Four Winns Professional Marine Dealer for complete and up-to-date information. Please respect the marine environment, be courteous to others on the water and follow the rules of safe boating. Four Winns, Stable-Vee and Vista are registered trademarks of Genmar IP LLC. Funship, Horizon, Sundowner and Sure-Load are trademarks of Four Winns Boats, L.L.C.

PART # 090-2759-05

