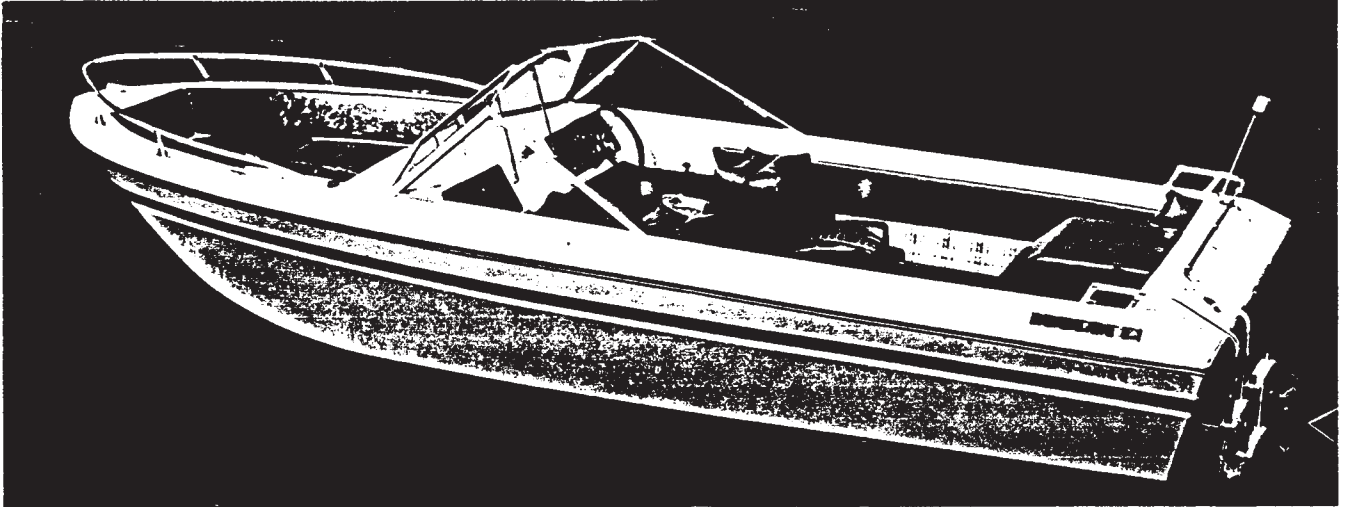




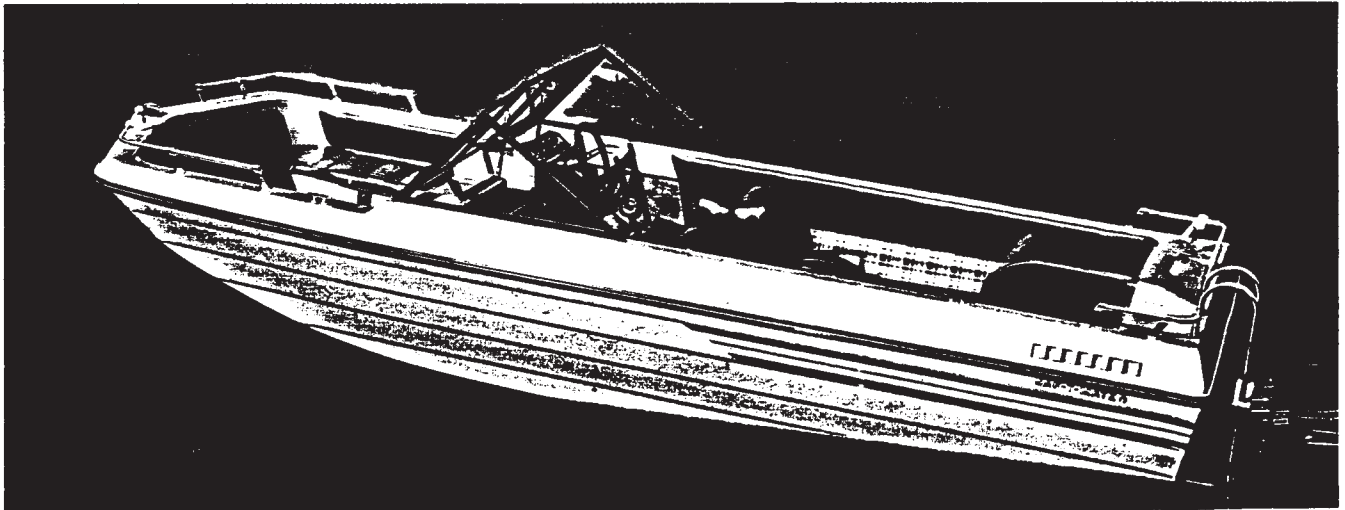
SAF-T-MATE

CADILLAC QUALITY BOATS

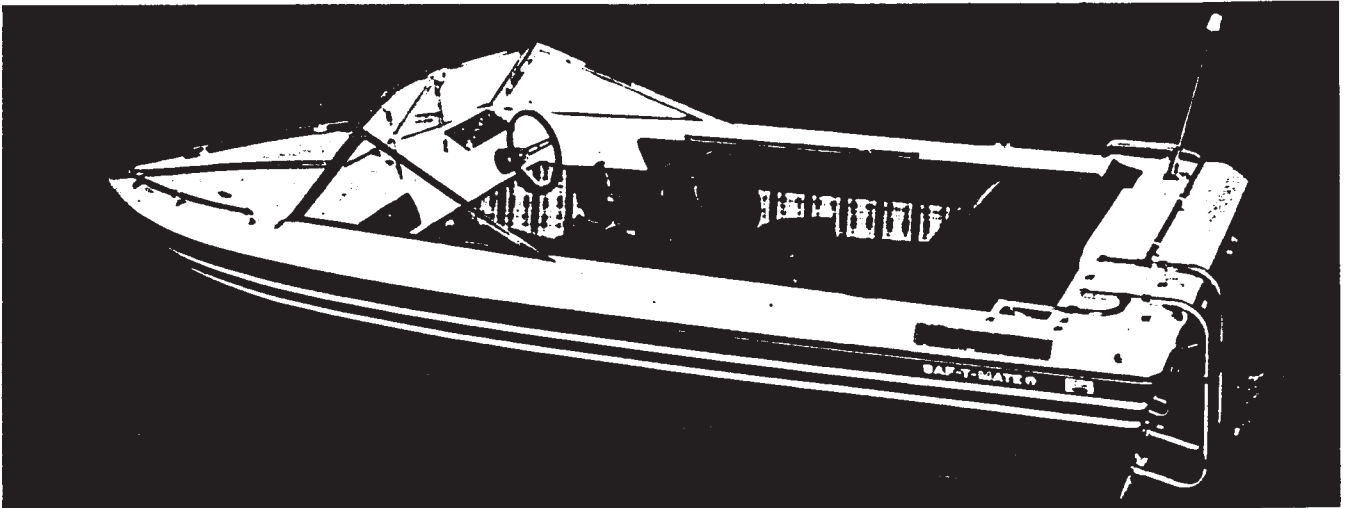
(NASSAU) ADMIRAL II



(CORDOVA) COMMODORE



(SIRROCO) CUTLASS



OUTBOARDS

ADMIRAL II O/B

Gunwale Length 19'9"
Length over-all 18'7"

Beam 89"
Depth 41"

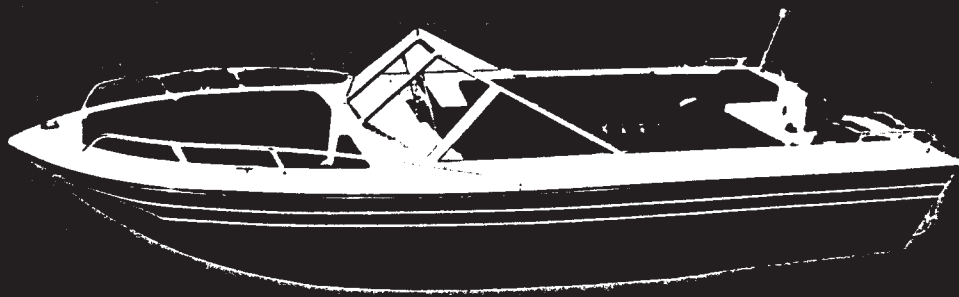
Approximate Weight 1235 lbs.

Maximum Horsepower 150

Includes Gas Tank 18 gal.

Elec. Gas Gauge

Transom Ladder



COMMODORE O/B

Gunwale Length 18'10"
Length over-all 16'10"

Beam 81"
Depth 37"

Approximate Weight 910 lbs.

Maximum Horsepower 115

Includes Gas Tank 12 gal.



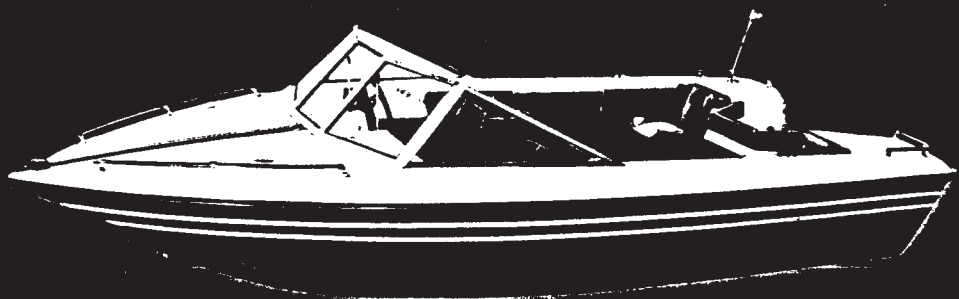
CUTLASS O/B

Gunwale Length 16'11"
Length over-all 16'2"

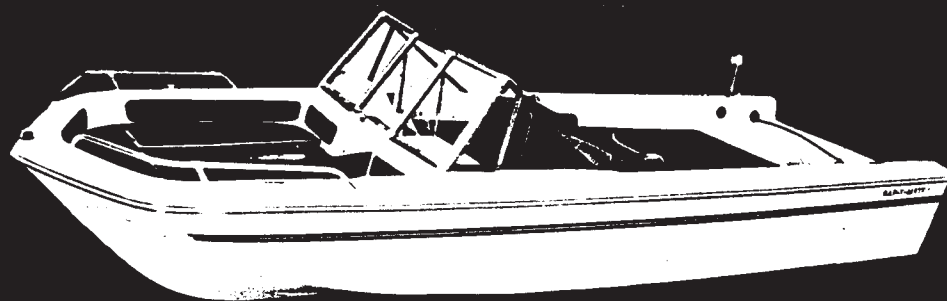
Beam 77"
Depth 39"

Approximate Weight 1020 lbs.

Maximum Horsepower 110

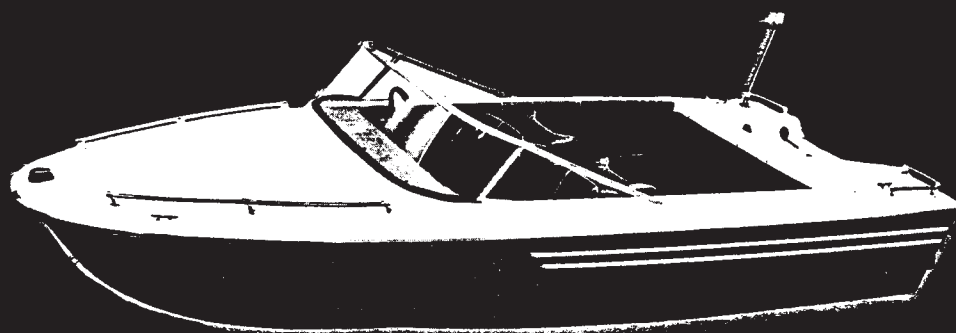


Saf-T-Mate outboards are handcrafted and made of the same high adaptability to long shaft motors. Standard features for the Admiral Windshield, Mechanical Steering with Deluxe Steering Wheel, Complete Hardware and Lighting is included on all O/B's. Optional



CAPTAIN O/B

**Gunwale Length 17'2"
Length over-all 15'4"
Beam 70"
Depth 32"
Approximate Weight 730 lbs.
Maximum Horsepower 70**



SPRINT O/B (Bimini)

**Gunwale Length 15'3"
Length over-all 14'3"
Beam 70"
Depth 37"
Approximate Weight 600 lbs.
Maximum Horsepower 75**



COMMANDER O/B

**Gunwale Length 15'10"
Length over-all 14'8"
Beam 71"
Depth 31"
Approximate Weight 525 lbs.
Maximum Horsepower 60**

Quality materials used in the I/O's. All O/B's have a 20 inch transom for Admiral II, Commodore, Captain, and Cutlass include: Tempered Safety Glass Locking Glove Box, Marine Carpeting, and Upholstered Components. Equipment: Complete Vinyl Top.



SAF-T-MATE
CADILLAC QUALITY BOATS



WARRANTY

We warrant each new hull and deck to be free from structural defects in material and workmanship under normal operating conditions for a period of 1 full year from the date of delivery to the original purchase. To validate this warranty the registration card must be completed and returned to the factory within ten days after original purchase.

We will make all necessary repairs under this warranty free of charge at our factory or will authorize our dealer to make such repairs. Return transportation of any boat is to be paid by the owner.

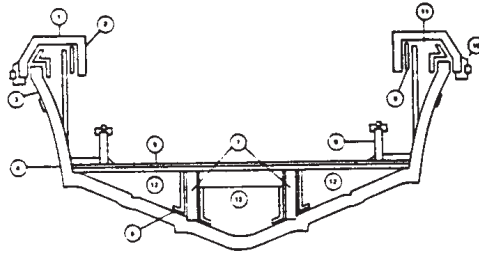
This warranty does not apply to: (1) engines, out-drives, controls, batteries, or other equipment or accessories carrying their own individual warranties (appropriate adjustments to them being provided by their respective manufacturers); (2) installation of engines or accessories installed by others; (3) windshield breakage, gel coat cracks or crazing; (4) all canvas, vinyl, upholstery, plastics, fabric, and trim; (5) any Saf-T-Mate Boat which has been altered, over-powered, subjected to misuse, negligence or accident or used for racing purposes.

This warranty is expressly in lieu of any other expressed or implied warranty and all other obligations on the part of Saf-T-Mate, Inc. Saf-T-Mate neither assumes nor authorizes any other person to extend any other warranty or to assume for it any liability in connection with Saf-T-Mate Boats.

CAUTION — Saf-T-Mate boats contain foam flotation, however, there is no boat that is unsinkable, therefore life preservers must be carried for each passenger in accordance with U.S. Coast Guard Requirements.

Quality materials used in the I/O's. All O/B's have a 20 inch transom for Admiral II, Commodore, Captain, and Cutlass include: Tempered Safety Glass Locking Glove Box, Marine Carpeting, and Upholstered Components. Equipment: Complete Vinyl Top.

Handcrafted Quality Makes The Difference



1. Gel Coat.
2. Hand rolled fiberglass deck.
3. Hand rolled fiberglass hull.
4. Deck bolted to hull.
5. Marine plywood floor completely covered with fiberglass reinforcing.
6. Double fiberglass reinforcing.
7. Full length fir stringers.
8. Upholstered side panels.
9. Plywood coaming stringers.
10. Aluminum gunwale with vinyl insert.
11. Wood reinforcing under fittings.
12. Rigid cell urethane foam sprayed between stringers and hull before floor placement. Exceeds U.S. Coast Guard flotation requirements.

SAF-T-MATE BOATS

All Saf-T-Mate boats meet or exceed stability tests as set forth by the Boating Industry Association and are B.I.A. rated for maximum horsepower. Saf-T-Mate boats contain sufficient flotation to meet B.I.A. and U.S.C.G. requirements. It is recommended, however, that foam flotation devices be carried for each passenger, as required by State and Federal laws.

B I A CERTIFIED

to Meet or Exceed Requirements of the Boating Industry Association.



I/O FEATURES AND SPECIFICATIONS

ADMIRAL II

The Admiral II's Cathedral hull gives you the smooth ride of a deep "V", at planing speeds; yet the recessed outer hulls provide the stability of a tri-hull, at slower speeds. The open bow design gives the large family, or the fisherman, more usable space.

| | |
|----------------|--------------------|
| Gunwale Length | 19'9" |
| L.O.A. | 18'7" |
| Beam | 89" |
| Depth | 41" |
| Weight I/O | 2098 lbs./165 H.P. |
| H.P. I/O | 140 or 165 |

COMMODORE

If it is luxury, excellence and speed you are after, the Commodore is the boat to see. Whether you are looking for the thrills of Water Skiing or the excitement of pulling in the big one, the Commodore is the boat for you. A boat that goes where you want to go. Not too big to trailer, but still with plenty of beam, and lots of free-board for the rough water. Her interior is plush with lots of room for extra anglers-(or Skiers) AND their gear!

| | |
|----------------|-------------------|
| Gunwale Length | 18'10" |
| L.O.A. | 16'10" |
| Beam | 81" |
| Depth | 37" |
| Weight I/O | 1685 lbs./120H.P. |
| H.P. I/O | 120 or 140 |

CUTLASS

For skiing, fishing or just exploring the Cutlass meets every test. Want performance? You got it with the rugged 16 ft. "Cutlass". Her Deep-V Hull takes you over the roughest water without a jar. One look at her sleek lines and plush interior and you know ... She's Got Class! The I/O has a boarding ladder and all the deluxe features found in the Admiral.

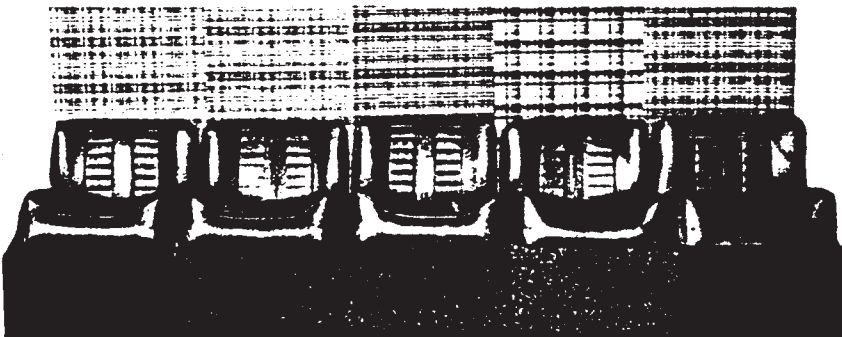
| | |
|----------------|--------------------|
| Gunwale Length | 16'11" |
| L.O.A. | 16'2" |
| Beam | 77" |
| Depth | 39" |
| Weight I/O | 1668 lbs./120 H.P. |
| H.P. I/O | 120 or 140 |

MerCruiser and OMC engines are available from Saf-T-Mate.

The following equipment is included on Standard Model I/O's:

Tempered Safety Glass Windshield, Mechanical Steering with Stainless Steel Steering Wheel, Locking Glove Box, Forward Storage Compartments, Bow and Stern Rails, Ladder, 18 Gal. Gas Tank with Approved Ventilation, Complete Hardware and Lighting, Bilge Pump and Blower.

Optional Equipment: Complete Vinyl Top and Saf-T-Mate Trailer.



Color Coordinated Interiors include Marine Carpeting with Synthetic Backing (impervious to Gas & Oil), Decoratively Matched Side Panels, and fine quality Heavy Duty Marine Vinyl Upholstered pieces throughout - Bow and Gunwale Cushions, Lounge Seats, Sleeper Seats, Stern Seats, Engine Cover, and Ski Racks.



SAF-T-MATE
CADILLAC QUALITY BOATS

8586 E. Boon Road / Cadillac, Michigan 49601 / Phone (616) 775-4272